

Specification

Operation system		Microsoft Windows 7/ 8/ 10/ 11
Hardware	Processor	Intel Core i5 (Recommended) Intel Core i3 (Minimum)
	RAM	8GB (Recommended) 4GB (Minimum)
	ROM	1TB (Recommended) 1GB (Minimum)
	GPU	Direct X9 compatible 2GB discrete graphics (Recommended) Direct X9 compatible integrated graphics (Minimum)
Software License		Software registration code
		USB dongle driver
Supported Language		English/ French/ Spanish/ Portuguese/ Japanese
Features		Intuitive workflow
		QC quality inspection
		Legend encoding
		Support RTK/ Total Station
		Road Design/ DTM work
		Online map
		Intersection
		Instruction manuals
		Property configuration
		Tolerance calculations
Practical Tools		Height grid tool
		Coordinate system management
		Antenna management
		Rinex convert
		Parameter calculation widget
		Conversion tools

SATLAB
GEOSOLUTIONS

Headquarters:
Stora Ävägen 21, 436 34 ASKIM,
Sweden

Regional Offices:
Budapest, Hungary
Ankara, Turkey
Dubai, UAE
New Delhi, India
Scottsdale, USA
Tokyo, Japan
Hong Kong, China

www.satlab.com.se



24M222



SatLab Geobiz Solutions 2.0

— All-in-One Post-Processing Desktop Software



All-in-One Post-Processing Desktop Software

Satlab Geobiz Solutions 2.0 is an integrated office software incorporating modules such as GNSS, RTK, Total Station, and UAV. It eliminates the need to switch between different data processing software, simplifies the workflow, and improves the data processing efficiency. Satlab Geobiz Solutions 2.0 is very suitable for processing data collected from multiple types of surveying products within the same project.



Through advanced static, rapid static, PPK, and PPP algorithms to process GNSS data, and the PPK post-processing results can be used to check field coordinates.



Supports importing RTK project data, processing and sorting RTK data on a larger screen conveniently and intuitively. It supports Total Station traverse adjustment at the same time.

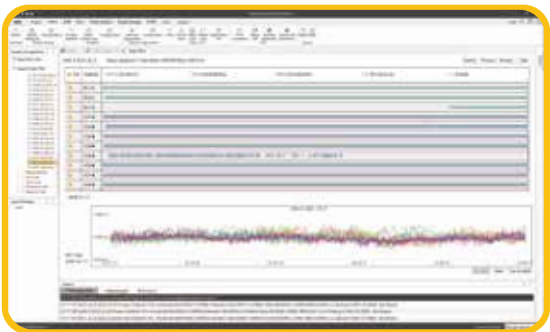


Supports road design, preview, verification and other work on the computer side, and also supports earthwork calculation.



SGS2.0 offers an extensive toolset, including coordinate and RINEX converters, angular, distance, and various COGO calculation tools, GNSS antenna managers, and GNSS observation files merging.

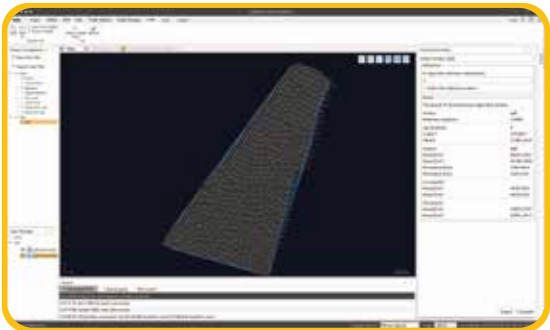
KEY FUNCTIONS



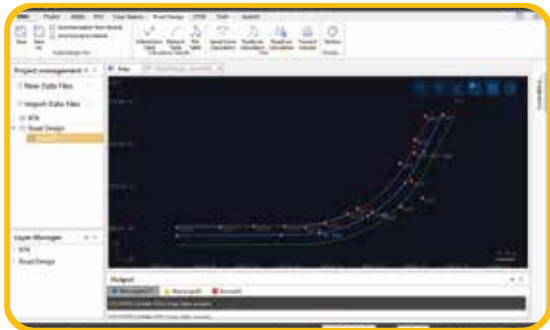
GNSS Data Processing



Mapping



DTM



Road Design

POST-PROCESSING

- Stop&Go-Static-Kinematic
- Multiple baseline processing
- Network Adjustment
- Loop closure
- PPP Processing
- Data Quality Analysis
- Rinex Conversion

TOPOGRAPHY

- Multi-project Management
- Parameters Calculation
- Framework Shifting
- Code List
- Grid to Ground
- Traverse Adjustment
- DTM&Volumes Calculation

TOOLS

- Antenna Management
- Angle&Dist. Conversion
- Height Grid
- Coordinate Conversion
- Online Map