

# HydroFlow 600/1200

Acoustic Doppler Current Profiler



# HydroFlow 600 / 1200

The HydroFlow series direct-reading Acoustic Doppler Current Profiler(ADCP) is an accurate and easy to use current profiling system, which can be deployed on flexible platform: trimaran, USV and so on. Providing accurate measurement with 90m/40m range, the HydroFlow 600/ 1200 can be widely used for monitoring and surveying discharge of rivers, canal, offshore and other engineering projects.



### Multiple Built-in Sensors

Integrating the gyro, temperature, and tilting sensor, HydroFlow 600/1200 offers multiple source of information for the operation reference.



### Long Profiling Range Multiple Cells

600Hz working frequency extends the current measurement range up to 90 meter (HydroFlow1200 up to 35m) with maximum 260 cells.



### High Precision Current Measurement

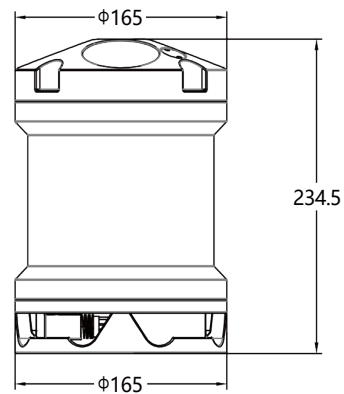
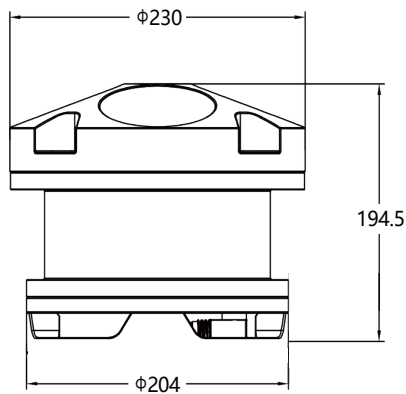
Supported by broadband signal processing technology, the anti-noise level has been improved while the current measurement accuracy can be up to  $0.25\% \pm 0.25\text{cm/s}$ .



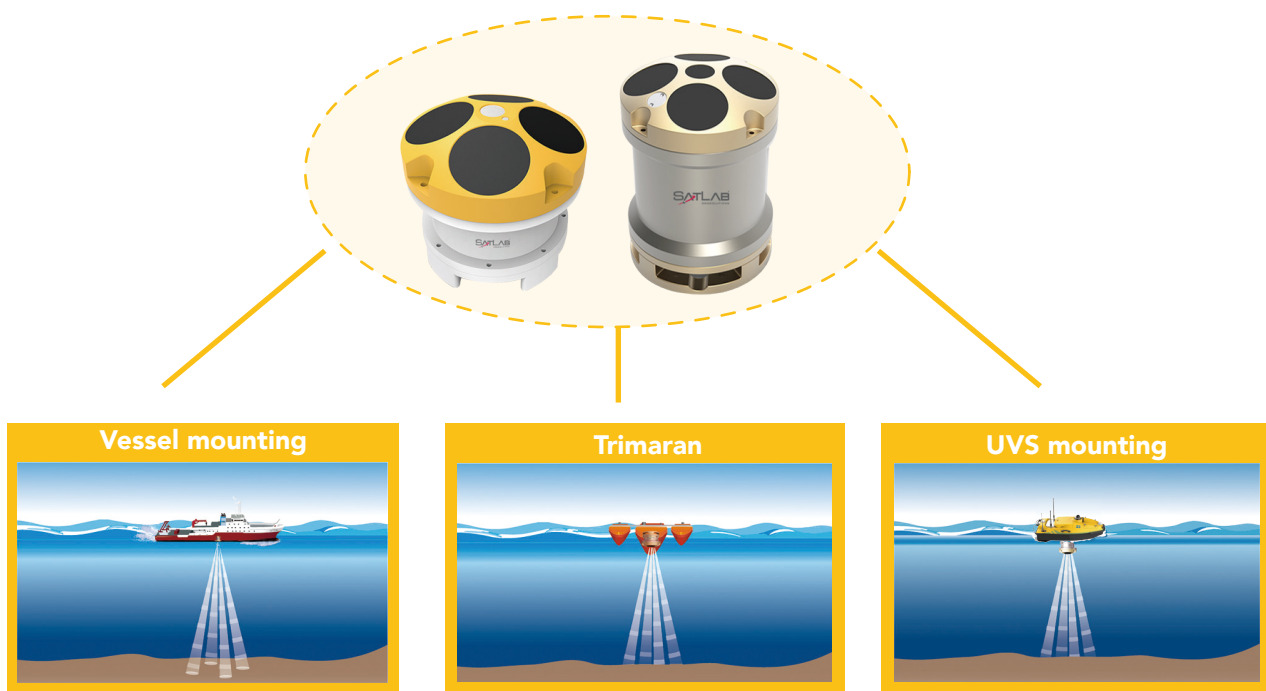
### Easy to Use Software

Clear software working flow and UI lower the learning curve, making it easy to use.

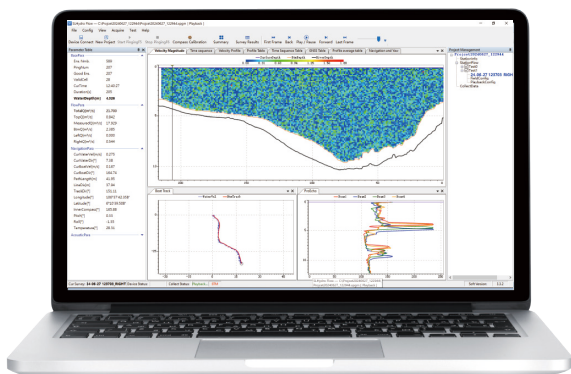
## Dimensions



## Flexible and versatile mounting



## Software



 Windows



 Android

TECHNICAL SUPPORT  
SatLab offers online resources and  
a professional support network  
available worldwide.

# HydroFlow 600 / 1200

## Acoustic Doppler Current Profiler

### Data Specifications

Model	HydroFlow 600	HydroFlow1200
<b>Transducer and hardware</b>		
System frequency	600kHz	1200kHz
Internal memory	16G standard	
Transducer type	Piston	
Working mode	Broadband, Narrowband, Pulse Coherente	
Beam	4 Beams Janus, 20°	5 Beams Janus, 20° (600kHz central beam)
Updating rate	Max 20Hz	
<b>Water Velocity Profiling</b>		
Velocity range (typical)	± 5m/s	
Velocity range (maximum)	± 20m/s	
Accuracy	0.25% ±0.2cm/s	
Resolution	1 mm/s	
Profiling range(distance)	0.3-90m	0.1-40m
<b>Bottom tracking</b>		
Velocity range	± 5m/s typical, ± 20m/s maximum	
Depth range(minimum)	0.8m	0.15m
Depth range(maximum)	0.4-120m	0.15-50m
Depth range	90m	35m
Accuracy	+0.25% of water velocity relative to ADCP	
Resolution	1 mm/s	
<b>Cell</b>		
Cell depth	0.05-4m	0.02-2m
Quantity	1~260	
<b>Internal Sensors</b>		
Temperature: range/accuracy/resolution	-10°C ~ +60°C / ±0.1°C / 0.001°C	
Compass: range/accuracy/resolution	0° ~ 360° / ±0.5° / 0.001°	
Motion sensor: range/accuracy/resolution	±30° / ±0.2° / 0.001°	
Pressure sensor (optional) (range accuracy/resolution)	0-200m/0.5%FS/0.01m	
<b>Material</b>		
Engineering plastic, aluminum alloy and titanium alloy three material selectable		
<b>Communication</b>		
Communication protocol	RS-232 typical, RS-422, WIFI(optional)	
Baud rate	4800-115200	
<b>Power</b>		
Input	9~18VDC (standard 12V)	
Power consumption	3.5W (average)	
<b>Environment</b>		
Working temperature	-5°C ~ +45°C	
Storage temperature	-20°C ~ +60°C	
<b>Float (Optional)</b>		
Configuration	Three hulls(Trimaran), USV	
Material	Polyethylene(Trimaran), Carbon Fiber (USV)	
<b>Accessories</b>		
ADCP with Transducer, Cables, Charger, Processing software		



#### Headquarters:

Geosolution i Göteborg AB  
Stora Åvägen 21, 436 34 ASKIM,  
Sweden

#### Regional Offices:

Warsaw, Poland  
Jičín, Czech Republic  
Ankara, Turkey  
Scottsdale, USA  
Singapore  
Hong Kong, China  
Dubai, UAE

[www.satlab.com.se](http://www.satlab.com.se)

24N106



• Specifications and accessories are subject to change. We reserve the right to the final interpretation.  
• All listed parameters are either theoretical values or measured under controlled conditions.